

DO NOT USE ON OPEN FACE HELMETS

READ ALL INSTRUCTIONS BEFORE STARTING

WARNING:

NO WARRANTY OR REPRESENTATION IS MADE AS TO THIS PRODUCTS ABILITY TO PROTECT THE USER FROM ANY INJURY OR DEATH. THE USER ASSUMES THAT RISK

HELMET MOUNTING

1. The Wright Device comes with the webbing prethreaded but must be adjusted to fit the helmet. Center the Wright Device on the helmet so that the release button is at the bottom of the back of the helmet and adjust the hooks so they are attached to the sides and top of the eye opening of the helmet. You may have to remove part or all of the gasket from the eye opening where the hook attaches for it to fit properly.
2. When you have the hooks adjusted where you want remove the hooks (one at a time or all at once) and finish threading the webbing (see figure U6.)
3. With the Wright Device in place, mark the position of each piece of Velcro on the helmet. Push the Wright Device up and remove the Velcro piece that attaches to the helmet and place it on the helmet.
4. Apply a small amount of RTV to the curved surface of the hook and place hooks on helmet. **This is to keep the hooks from coming off. You may use tape to hold them in place. Check them at each event to make sure they are tight!!!**
5. Put a piece of paper between the Velcro on the helmet and the Velcro on the Wright Device and slide the Wright Device into position. Slide the paper out and press the Velcro together.

*******RTV ALL HOOKS TO THE HELMET *******

**ALL OF THE WEBBING MUST PASS THROUGH THE THREADING PLATES
AS ILLUSTRATED WHEN FINISHED**

**VISOR MAY NEED TO BE CUT OUT WHERE HOOKS GO UNDER TO FIT
PROPERLY**

ATTACHMENT FROM HELMET

Shoulder Harness Mounting

If you use a harness that has an adjuster, attach the straps to the existing adjuster. Fill pieces are optional. (see figure 7) If the straps are not long enough, either add the supplied 3" adjuster to your harness or call for longer straps (no charge) If you cannot add the adjuster to your harness, you may wrap the harness around the roll cage behind the seat. Use the 1" adjusters.

Feed the webbing straps through the male part of the buckle. Remove the plastic cover from the male part of the buckle and thread the webbing as shown in figure 8.

While seated in the car, adjust the webbing for comfort.

Body Harness Attachment

Feed the webbing straps through the male part of the buckle. Remove the plastic cover from the male part of the buckle and thread the webbing as shown in figure 8.

BODY HARNESS FIT

“H” Type

. It looks complicated but once you figure it out – it still seems complicated. Here are a few hints to get you started. The straps to the helmet are sewn on the back of the harness just below the plastic cross over piece. The harness should be untwisted from the crossover piece to the large (2”) yellow strap at the bottom of the harness. This large yellow strap goes behind your butt. The front of the device has an ”H” type harness that is adjustable up, down and opening size. It is held together with two rectangular pieces (latch). When turned sideways – one will fit into the other. The leg latches are of the same type. To put the harness on – put it on like a backpack. Down straps of the “H” in the front.

Crossover Type

It looks complicated but once you figure it out – it still seems complicated. Here are a few hints to get you started. The straps to the helmet are sewn on the back of the harness just below the plastic cross over piece. The harness should be untwisted from the crossover piece to the large (2”) yellow strap at the bottom of the harness. This large yellow strap goes behind your butt. The front of the device has a plastic crossover piece that can be adjusted up or down. The leg latches are held together with two rectangular pieces (latch). When turned sideways – one will fit into the other. To put the harness on – put it on like a backpack with your head going between the cross over pieces.

The body harness may be worn under the suit for comfort.

TRIM WEBBING ON HARNESS SO THAT 8 TO 10 INCHES ARE COMINGG OUT OF THE MALE SIDE OF THE BUCKLE AFTER ADJUSTING FOR FIT IN DRIVING POSITION.

WARNING:

NO WARRANTY OR REPRESENTATION IS MADE AS TO THIS PRODUCTS ABILITY TO PROTECT THE USER FROM ANY INJURY OR DEATH. THE USER ASSUMES THAT RISK

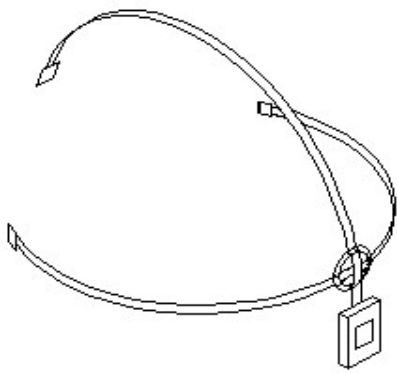
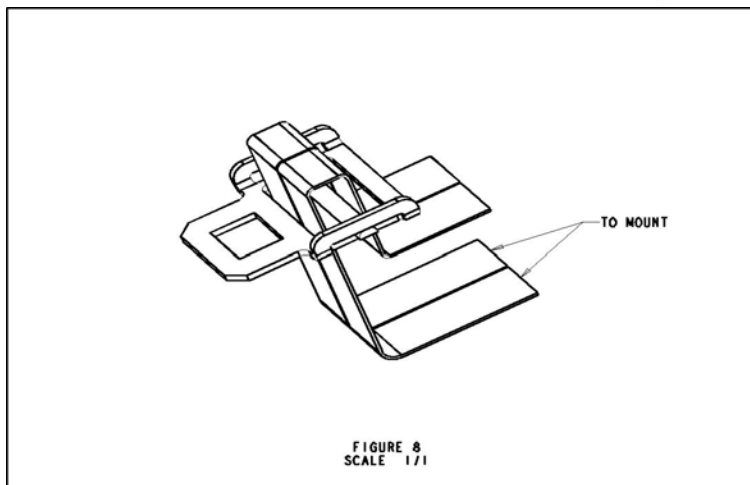


Figure U/4



Figure U/3



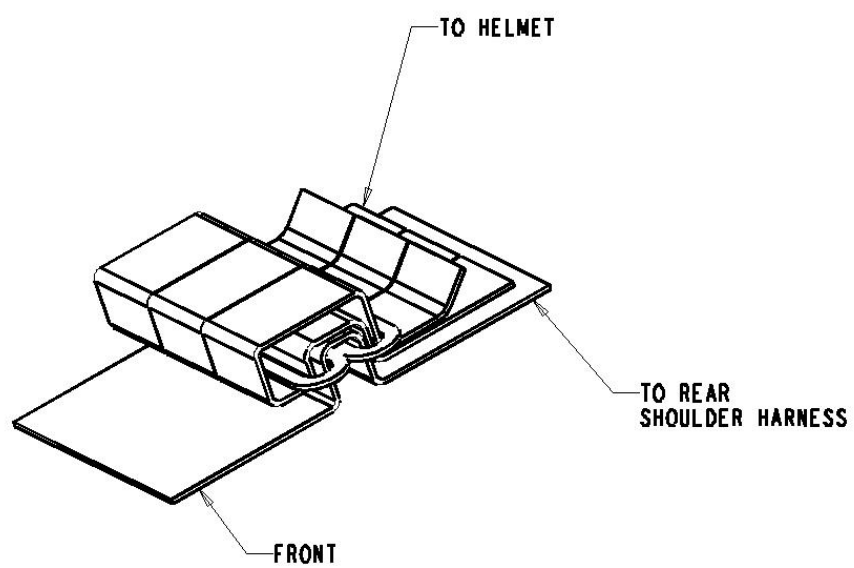


FIGURE 7
SCALE 1/1

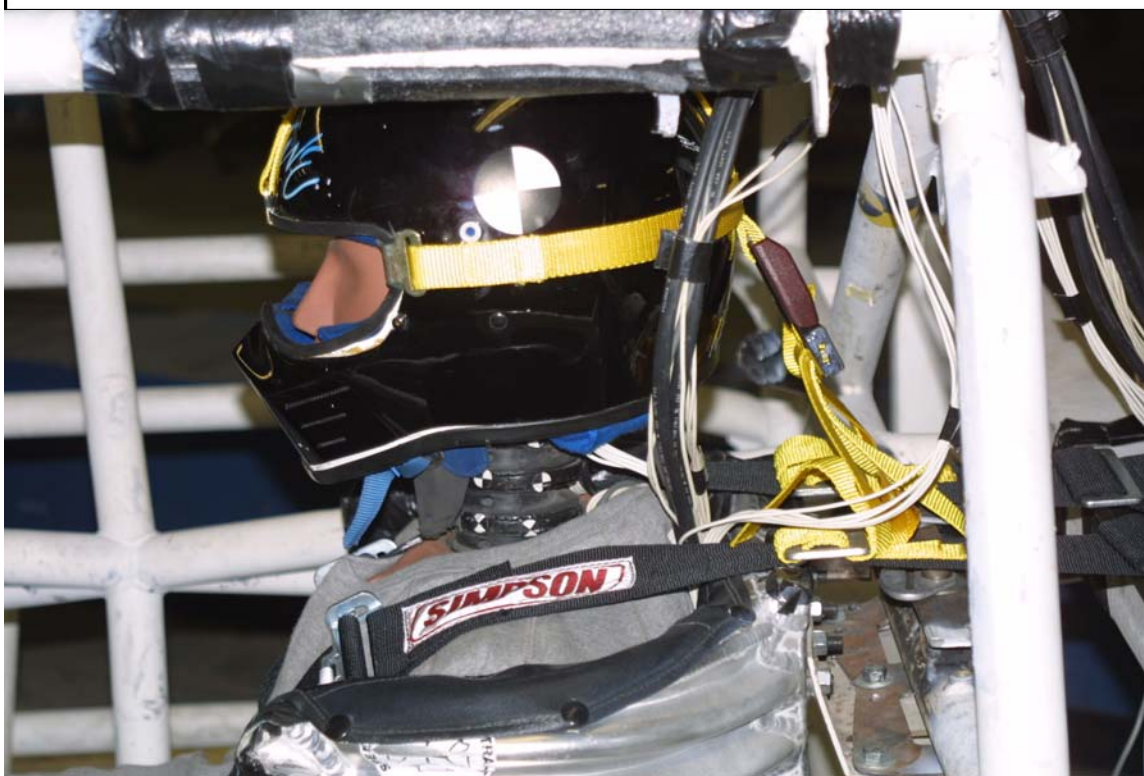


Figure U/5 - UPRIGHT



Figure U/6

