

# **DO NOT USE ON OPEN FACE HELMETS**

## **READ ALL INSTRUCTIONS BEFORE STARTING**

### **WARNING:**

**NO WARRANTY OR REPRESENTATION IS MADE AS TO THIS PRODUCTS ABILITY TO PROTECT THE USER FROM ANY INJURY OR DEATH. THE USER ASSUMES THAT RISK**

### ***HELMET MOUNTING***

1. The Wright Device comes with the webbing prethreaded. **Center** The Wright Device on helmet and adjust so that the release button is at the bottom of the back of the helmet. Using Velcro attach webbing to helmet.
2. Adjusting and attaching sides. When centered, finish threading one side (see figure U6) and attach with RTV. Adjust the other side so the edge of the hook is slightly shorter than necessary for fit. (1/8 to 1/4 inch) Finish threading this side (see figure U6), apply RTV and pull hook over the side of the helmet. (Should be tight). **This to keep it from riding up and the hooks coming off.**
3. Top hook placement: Some helmets have a thicker gasket around the eye opening. If the hook does not slide on easily, place the hook where it should go and take a razor blade and cut the gasket along the edge of the hook, remove the hook and cut the gasket section off the front of the helmet. Leave gasket on inside of helmet.
4. Let Dry. RTV all flat hooks onto helmet. **Extremely important!!!**

\*\*\*\*\* **RTV ALL HOOKS TO THE HELMET WHEN FINISHED.**\*\*\*\*\*

**ALL OF THE WEBBING MUST PASS THROUGH THE THREADING PLATES AS ILLUSTRATED WHEN FINISHED**

VISOR MAY NEED TO BE CUT OUT WHERE HOOKS GO UNDER TO FIT PROPERLY.

### ***ATTACHMENT FROM HELMET***

1. Feed the webbing from the body harness through the helmet attachment. Web as shown in the left end of figure 8. **Harness must be snug on body.**

**TRIM WEBBING ON HARNESS SO THAT 8 TO 12 INCHES ARE COMING OUT OF MALE SIDE OF BUCKLE AFTER ADJUSTING FOR FIT IN DRIVING POSITION**

### ***HARNESS FIT***

Verbal and pictorial instructions are sewn on the harness.

There are two plastic pieces where the harness straps cross over. The head goes between these.

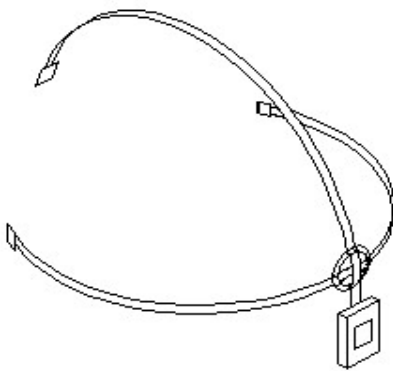
The two one inch yellow straps go in the back. The large yellow strap goes under the butt.

Harness should be put on like a backpack – with the yellow straps in the back.

**USE OF ANY OTHER PARTS WILL RESULT IN AN UNTESTED SYSTEM THAT  
MAY NOT BE SAFE.**

**WARNING:**

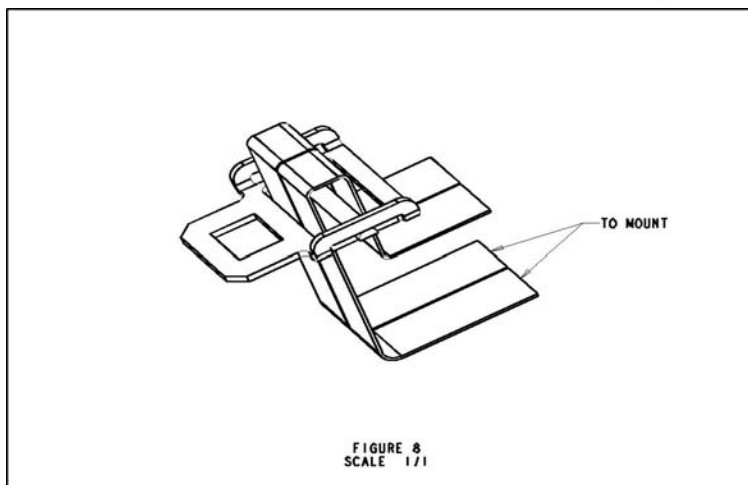
**NO WARRANTY OR REPRESENTATION IS MADE AS TO THIS PRODUCTS ABILITY TO  
PROTECT THE USER FROM ANY INJURY OR DEATH. THE USER ASSUMES THAT RISK**



**Figure U/4**



**Figure U/3**



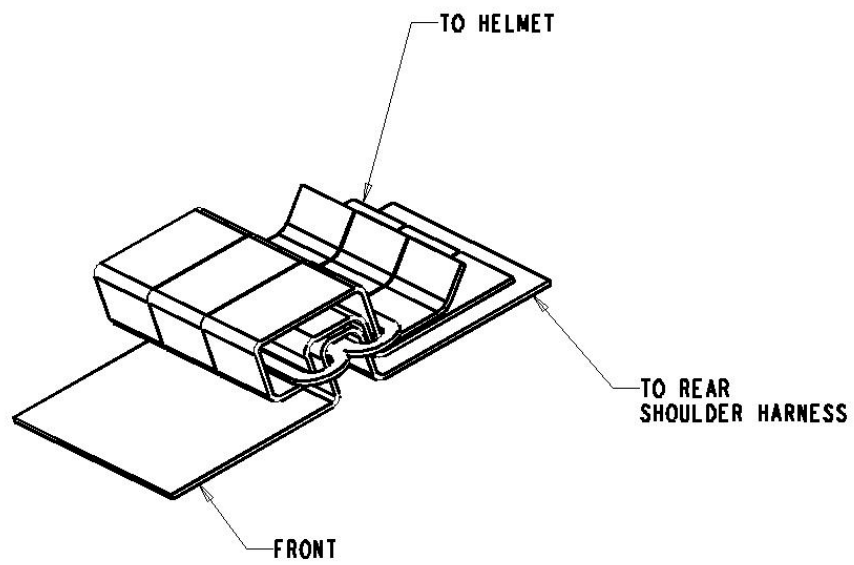


FIGURE 7  
SCALE 1/1

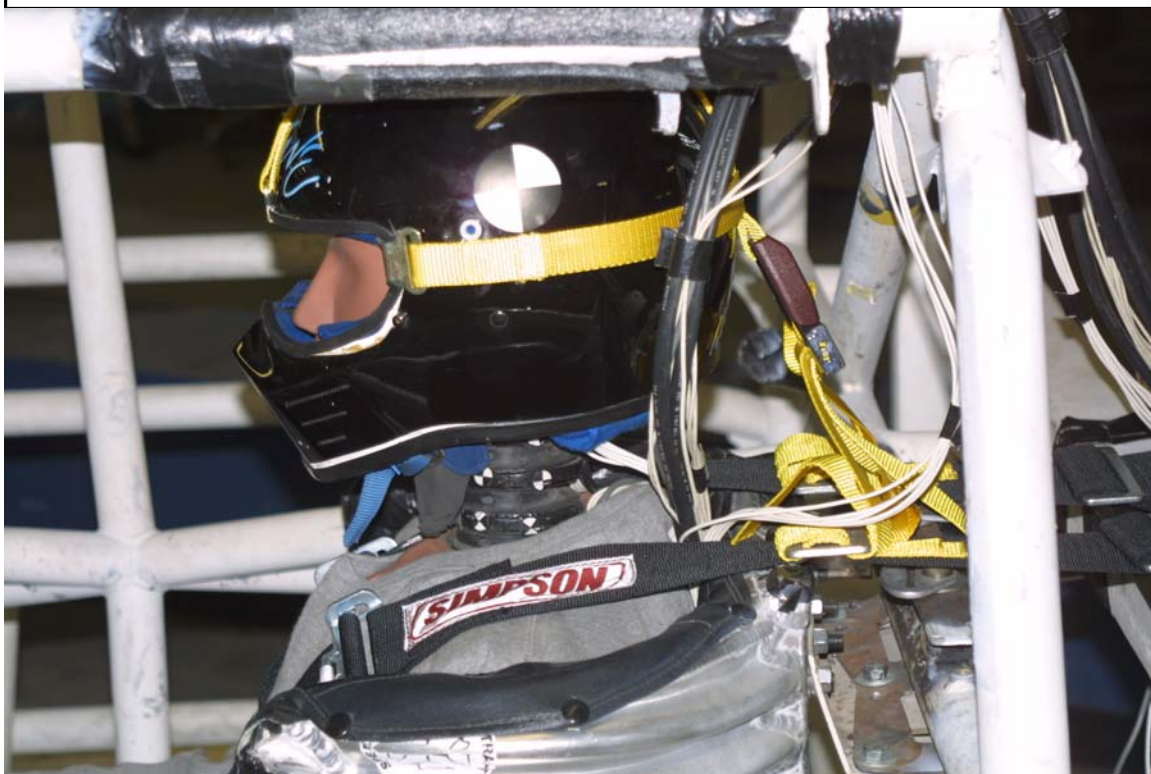


Figure U/5 - UPRIGHT



JAY M. WRIGHT, PE  
HEAD RESTRAINT

Figure U/6



# The Wright Device Pro



[www.photosbyWayneHill.com](http://www.photosbyWayneHill.com)



The Wright Device Pro with body harness



The Wright Device Pro with body harness



[www.photosbyWayneHill.com](http://www.photosbyWayneHill.com)

The Wright Device Pro with body harness

